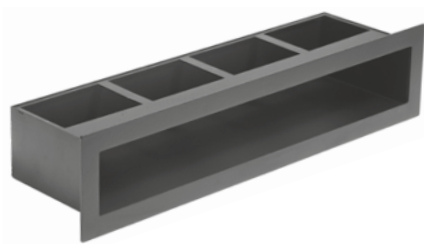
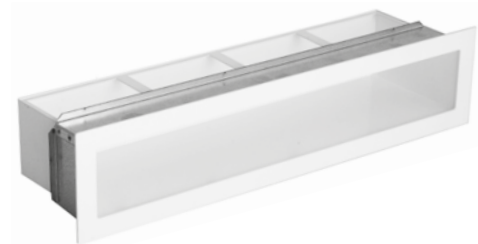




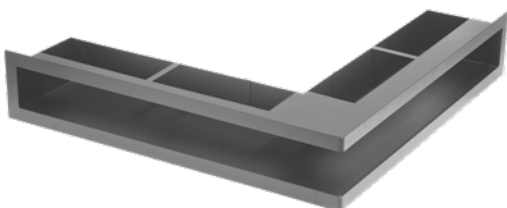
Versions:



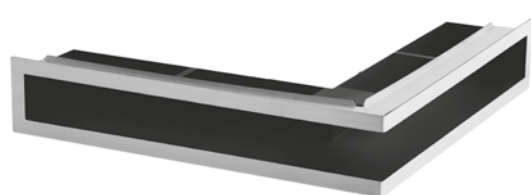
GRILLE V-OPEN



GRILLE V-OPEN WITH FRAME



CORNER GRILLE V-OPEN

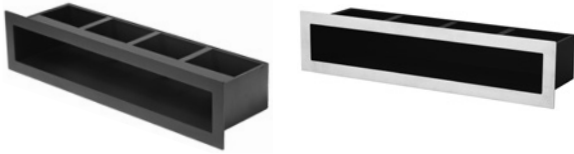


CORNER GRILLE V-OPEN WITH FRAME

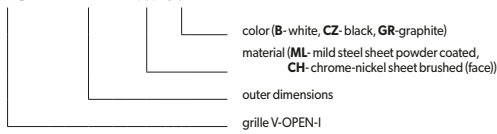
Destination	fireplace claddings	
	ventilation ducts, air heating	
	for interior mounting	
Material	ML	ML - mild steel sheet powder coated
	CH	CH - chrome-nickel sheet brushed (face)
Color	B	white
	CZ	black
	GR	graphite

Maximal working temperature: 180°C

GRILLE V-OPEN-I

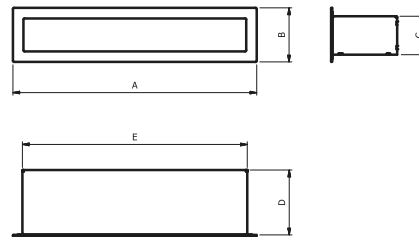


KRVO-I - AxB -a



Dimensions/technical data:

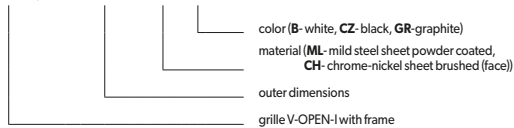
Face outer dimensions AxB [mm]	Cross section [cm ²]	Dimensions [mm]			Weight [kg]
		C	D	E	
450x100	235	71	120	415	1.4
700x100	395	71	120	665	1.5
900x100	515	71	120	865	2.6
450x70	125	41	91	415	1.2
700x70	210	41	91	665	2.0
900x70	265	41	91	865	2.2



GRILLE V-OPEN-I WITH FRAME

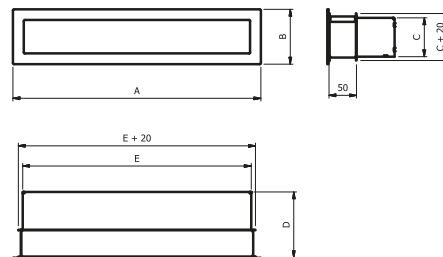


KRVO-I/R - AxB -a

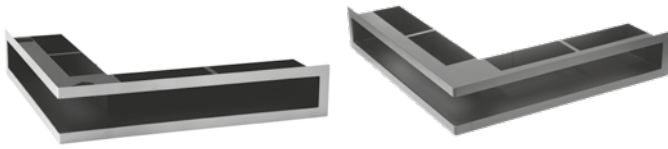


Dimensions/technical data:

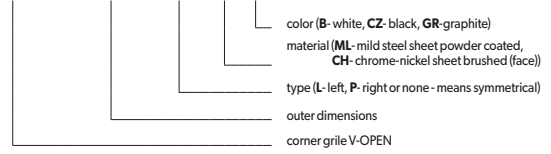
Face outer dimensions AxB [mm]	Cross section [cm ²]	Dimensions [mm]			Weight [kg]
		C	D	E	
450x100	235	71	120	415	1.9
700x100	395	71	120	665	2.7
900x100	515	71	120	865	3.6
450x70	125	41	91	415	1.7
700x70	210	41	91	665	2.3
900x70	265	41	91	865	3.2



CORNER GRILE V-OPEN

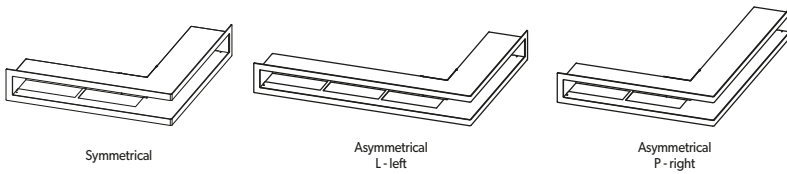
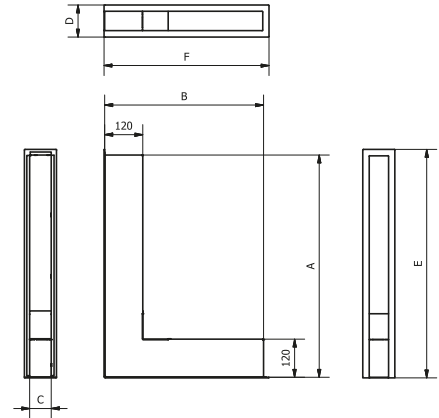


KRVO-L - Ax B/D - ... - ... a

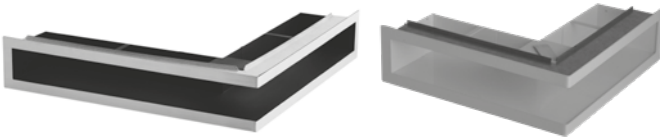


Dimensions/technical data:

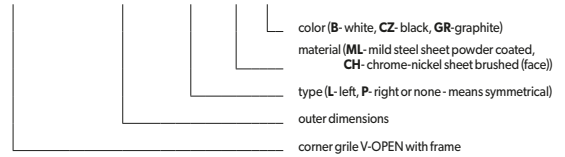
Type	Face outer dimensions Ax B/D [mm]	Cross section [cm ²]	Dimensions [mm]							Weight [kg]
			A	B	C	D	E	F	G	
P	300x500/100	365	300	500	68	100	320	520	120	2.1
	300x500/70	248	300	500	38	70	320	520	120	1.9
L	500x300/100	365	500	300	68	100	520	320	120	2.1
	500x300/70	248	500	300	38	70	520	320	120	1.9
-	500x500/100	495	500	500	68	100	520	520	120	3.4
	500x500/70	310	500	500	38	70	520	520	120	2.8
P	500x700/100	626	500	700	68	100	520	720	120	3.2
	500x700/70	372	500	700	38	70	520	720	120	2.9
L	700x500/100	626	700	500	68	100	720	520	120	3.2
	700x500/70	372	700	500	38	70	720	520	120	2.9



CORNER GRILE V-OPEN WITH FRAME

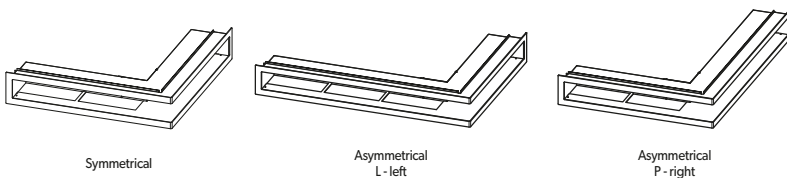
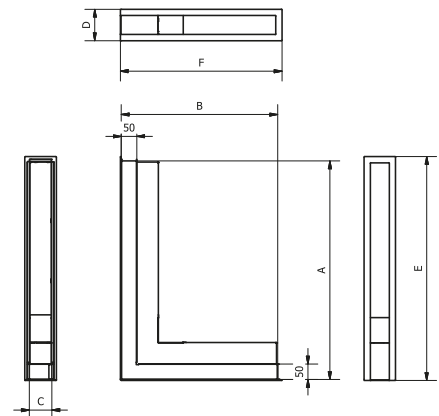


KRVO-L/R - Ax B/D - ... - ... a



Dimensions/technical data:

Type	Face outer dimensions Ax B/D [mm]	Cross section [cm ²]	Dimensions [mm]							Weight [kg]
			A	B	C	D	E	F	G	
P	300x500/100	365	300	500	68	100	320	520	120	2.9
	300x500/70	248	300	500	38	70	320	520	120	2.7
L	500x300/100	365	500	300	68	100	520	320	120	2.9
	500x300/70	248	500	300	38	70	520	320	120	2.7
-	500x500/100	495	500	500	68	100	520	520	120	3.8
	500x500/70	310	500	500	38	70	520	520	120	3.4
P	500x700/100	626	500	700	68	100	520	720	120	4.3
	500x700/70	372	500	700	38	70	520	720	120	4.0
L	700x500/100	626	700	500	68	100	720	520	120	4.3
	700x500/70	372	700	500	38	70	720	520	120	4.0



AN HOT AIR VENTILATOR



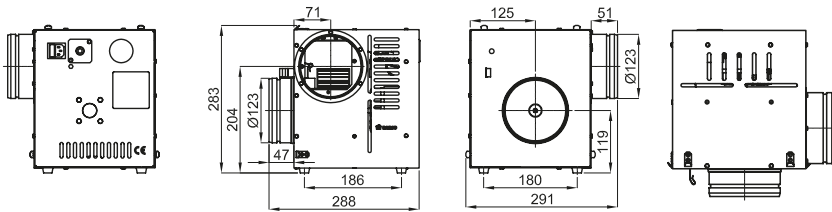
Destination	W	W - supply/exhaust ventilation
	O	O - air heating
Material	OC	OC - galvanised steel sheet

Technical data	AN1	AN2	AN3
Max efficiency [m ³ /h]	490	860	990
Max pressure [Pa]	150	220	210
Max power [W]	50	100	108
Voltage [V/Hz]	230/50		
Acoustic pressure [dB]	65		
Max hot air temperature [°C]	150		
Thermostat adjustment range [°C]	10-150		
Ambient temperature [°C]	50		
IP protection class	IP20		

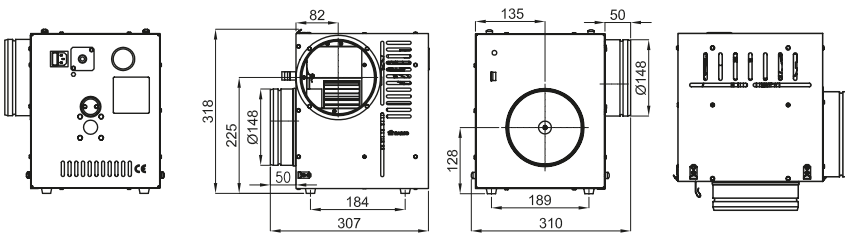


Hot air ventilators - types / dimensions

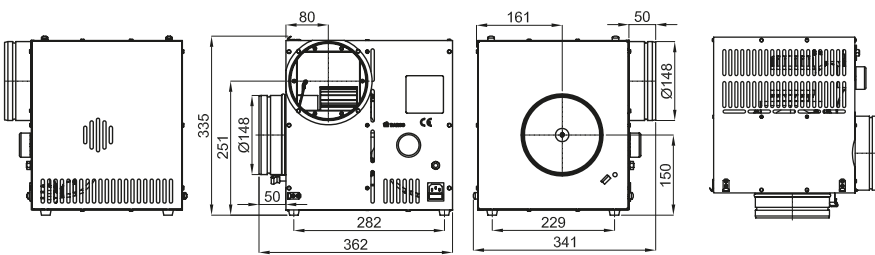
AN1



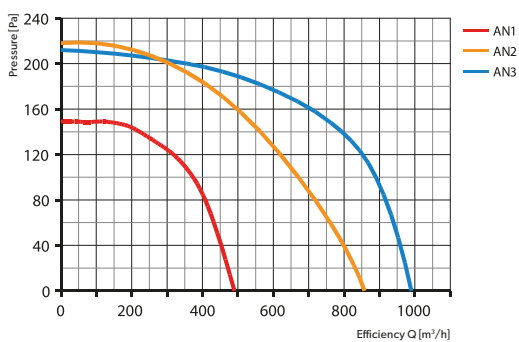
AN2



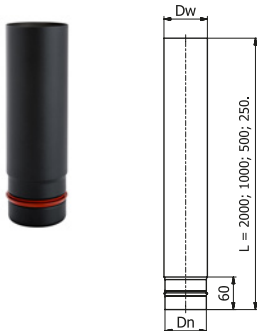
AN3



Airflow chart



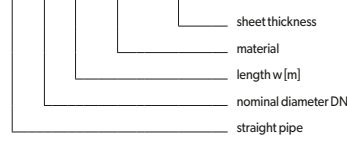
1. STRAIGHT PIPE 2000, 1000, 500, 250 [mm] RP



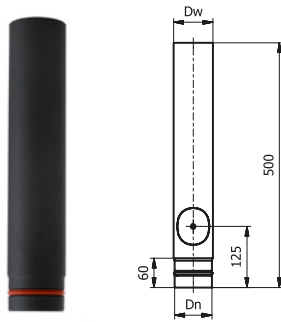
Length L	2000		1000		500		250	
	ø80	ø100	ø80	ø100	ø80	ø100	ø80	ø100
Diameter DN	77.7	97.8	77.7	97.8	77.7	97.8	77.7	97.8
Dw	77.7	97.8	77.7	97.8	77.7	97.8	77.7	97.8
Dn	76.0	96.1	76.0	96.1	76.0	96.1	76.0	96.1
Weight [kg]	4.8	5.9	2.4	2.95	1.2	1.5	0.6	0.75

Destination	D	D - smoke ducts
Material	CZ	CZ - mild steel DC01
Sheet thickness	1.2	1.2 - sheet thickness 1.2 mm

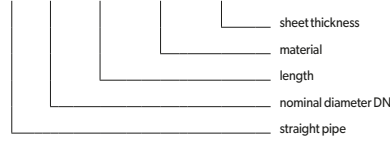
RP x/L - CZ 1,2SP



2. STRAIGHT PIPE WITH REVISION RPR



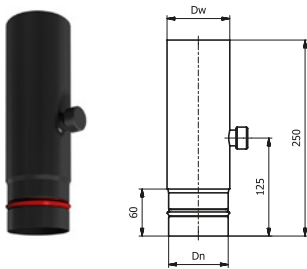
RPR x/0,50 - CZ 1,2SP



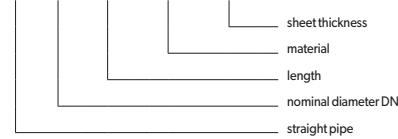
Diameter DN	ø80	ø100
Dw	77.7	97.8
Dn	76.0	96.1
Weight [kg]	1.3	1.6

Destination	D	D - smoke ducts
Material	CZ	CZ - mild steel DC01
Sheet thickness	1.2	1.2 - sheet thickness 1.2 mm

3. STRAIGHT PIPE WITH MEASURING OUTLET ROP



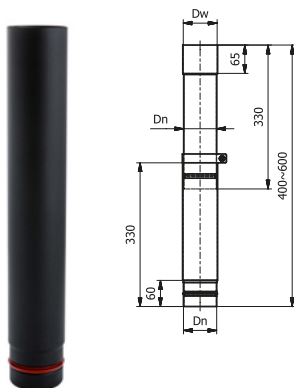
ROP x/0,25 - CZ 1,2SP



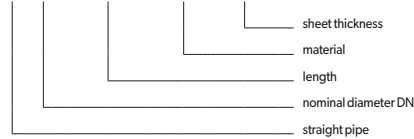
Diameter DN	ø80	ø100
Dw	77.7	97.8
Dn	76.0	96.1
Weight [kg]	0.70	0.85

Destination	D	D - smoke ducts
Material	CZ	CZ - mild steel DC01
Sheet thickness	1.2	1.2 - sheet thickness 1.2 mm

4. TELESCOPIC PIPE RT



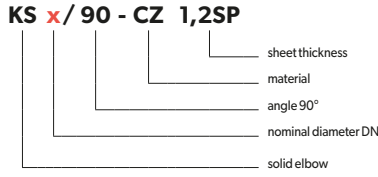
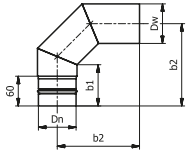
RT x/2x0,33 - CZ 1,2SP



Diameter DN	ø80	ø100
Dw	77.7	97.8
Dn	76.0	96.1
Weight [kg]	1.70	2.10

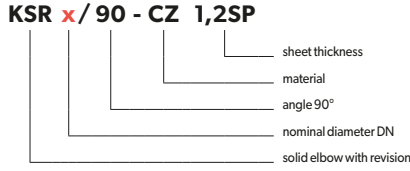
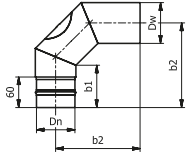
Destination	D	D - smoke ducts
Material	CZ	CZ - mild steel DC01
Sheet thickness	1.2	1.2 - sheet thickness 1.2 mm

5. SOLID ELBOW 90° KS/90, WITH REVISION KSR/90

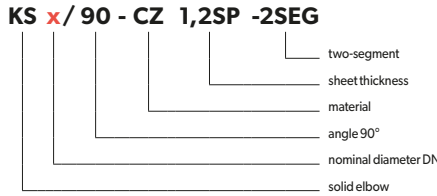
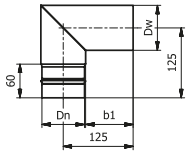


Diameter DN	ø80	ø100
Dw [mm]	77.7	97.8
Dn [mm]	76	96.1
b1 [mm]	83	79
b2 [mm]	167	165
Weight [kg]	KS	0.70
	KSR	0.8

Destination	D	D - smoke ducts
Material	CZ	CZ - mild steel DC01
Sheet thickness	1.2	1.2 - sheet thickness 1.2 mm

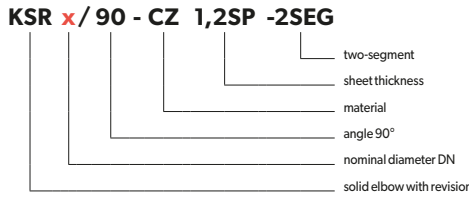
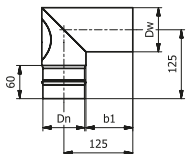


6. SOLID ELBOW 90° - 2 SEG. KS/90-2SEG, WITH REVISION/90-2SEG

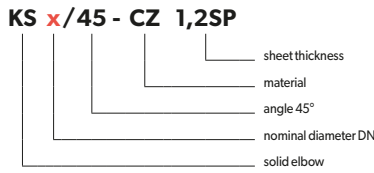
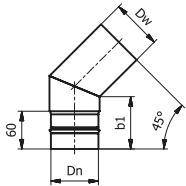


Diameter DN	ø80	ø100
Dw [mm]	77.7	97.8
Dn [mm]	76	96.1
b1 [mm]	85	75
Weight [kg]	KS	0.6
	KSR	0.7

Destination	D	D - smoke ducts
Material	CZ	CZ - mild steel DC01
Sheet thickness	1.2	1.2 - sheet thickness 1.2 mm

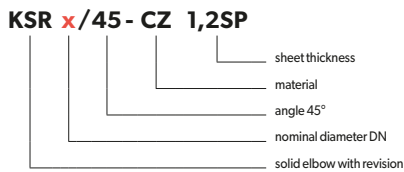
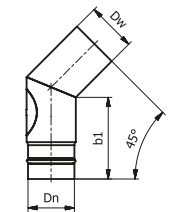


7. SOLID ELBOW 45° KS/45, WITH REVISION KSR/45

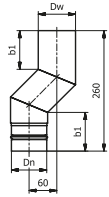


Diameter DN	ø80	ø100
Dw [mm]	77.7	97.8
Dn [mm]	76	96.1
b1 [mm]	KS	83
	KSR	133
Weight [kg]	KS	0.7
	KSR	0.9

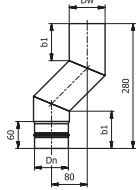
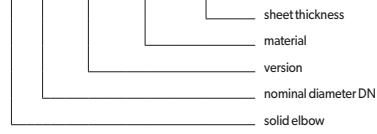
Destination	D	D - smoke ducts
Material	CZ	CZ - mild steel DC01
Sheet thickness	1.2	1.2 - sheet thickness 1.2 mm



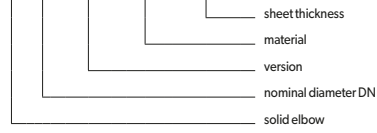
8. SOLID ELBOW S60, S80



KS x/S60 - CZ 1,2SP



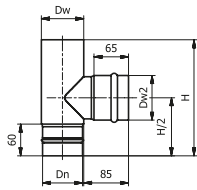
KS x/S80 - CZ 1,2SP



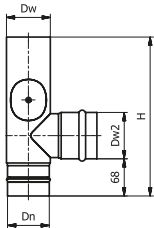
Diameter DN	ø80	ø100
Dw [mm]	77.7	97.8
Dn [mm]	76	96
b1 [mm]	83	79
Weight [kg]	KS	0.7
	KSR	0.85

Destination	D	D - smoke ducts
Material	CZ	CZ - mild steel DC01
Sheet thickness	1.2	1.2 - sheet thickness 1.2 mm

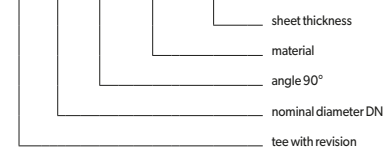
9. TEE 90° TR/90, WITH REVISION TRR/90



TR x/ 90 - CZ 1,2SP



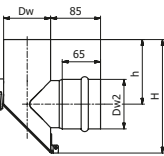
TRR x/ 90 - CZ 1,2SP



Diameter DN	ø80	ø100
Dw [mm]	77.7	97.8
Dn [mm]	76	96.1
H [mm]	TR	220
	TRR	290
Weight [kg]	TR	0.85
	TRR	1.15

Destination	D	D - smoke ducts
Material	CZ	CZ - mild steel DC01
Sheet thickness	1.2	1.2 - sheet thickness 1.2 mm

10. TEE WITH INSPECTION DOOR



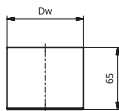
TRZ x/ 90 - CZ 1,2SP



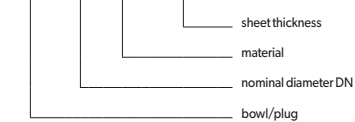
Diameter DN	ø80	ø100
Dw	77.7	97.8
Dw2	81	101
H	195	210
h	110	120
Weight [kg]	0.70	1.00

Destination	D	D - smoke ducts
Material	CZ	CZ - mild steel DC01
Sheet thickness	1.2	1.2 - sheet thickness 1.2 mm

11. BOWL/PLUG MS/Z



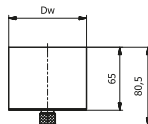
MS/Z x - CZ 1,2SP



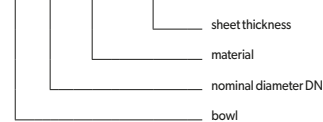
Diameter DN	ø80	ø100
Dw	77.7	97.8
Weight [kg]	0.25	0.35

Destination	D	D - smoke ducts
Material	CZ	CZ - mild steel DC01
Sheet thickness	1.2	1.2 - sheet thickness 1.2 mm

12. CONDENSATE DRAIN BOWL MS



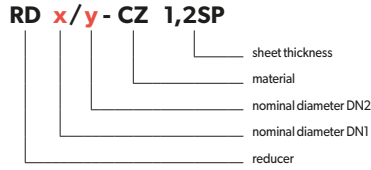
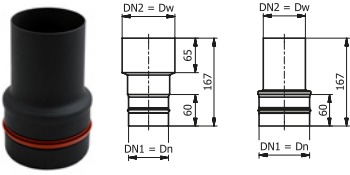
MS x - CZ 1,2SP



Diameter DN	ø80	ø100
Dw	77.7	97.8
Weight [kg]	0.40	0.50

Destination	D	D - smoke ducts
Material	CZ	CZ - mild steel DC01
Sheet thickness	1.2	1.2 - sheet thickness 1.2 mm

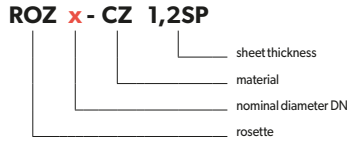
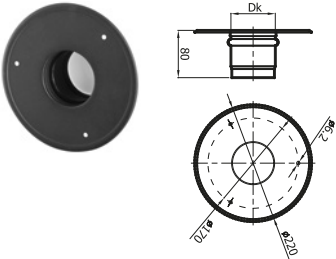
13. REDUCER RD



Diameter DN1/DN2	80/100	100/80
Weight [kg]	0.50	0.50

Destination	D	D - smoke ducts
Material	CZ	CZ - mild steel DC01
Sheet thickness	1.2	1.2 - sheet thickness 1.2 mm

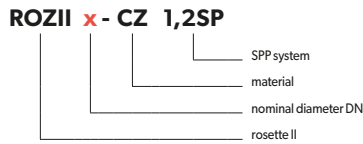
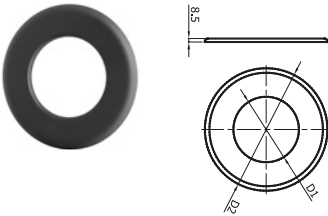
14. ROSETTE ROZ



Diameter DN	ø80	ø100
Dk [mm]	80.6	100.7
Weight [kg]	0.60	0.80

Destination	D	D - smoke ducts
Material	CZ	CZ - mild steel DC01
Sheet thickness	1.2	1.2 - sheet thickness 1.2 mm

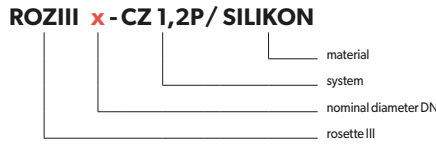
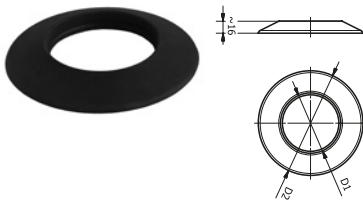
15. ROSETTE ROZII



Diameter DN	ø80	ø100
D1 [mm]	80.8	100.8
D2 [mm]	150	170
Weight [kg]	0.12	0.14

Destination	D	D - smoke ducts
Material	CZ	CZ - mild steel DC01

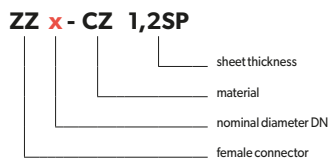
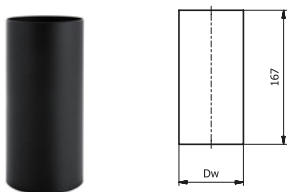
16. SILICONE ROSETTE ROZIII



Diameter DN	ø80	ø100
D1 [mm]	79.5	99.5
D2 [mm]	138	158
Weight [kg]	0.05	0.08

Destination	D	D - smoke ducts
Material	S	S - silicone

17. FEMALE CONNECTOR ZZ



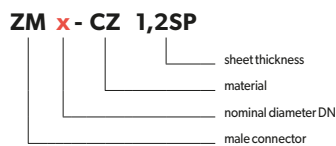
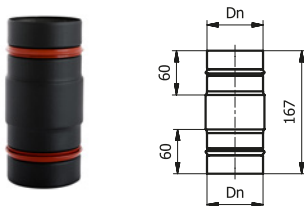
Diameter DN	ø80	ø100
Dw	77.7	97.8
Weight [kg]	0.45	0.55

Destination	D	D - smoke ducts
Material	CZ	CZ - mild steel DC01
Sheet thickness	1.2	1.2 - sheet thickness 1.2 mm

Caution!

Female connector allows to connect two spigot sided elements of the system and divert connection schema.

18. MALE CONNECTOR ZM



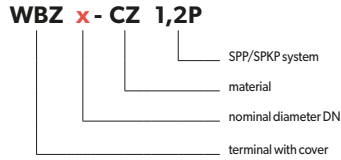
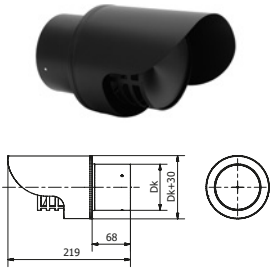
Diameter DN	ø80	ø100
Dn	76.0	96.1
Weight [kg]	0.45	0.55

Destination	D	D - smoke ducts
Material	CZ	CZ - mild steel DC01
Sheet thickness	1.2	1.2 - sheet thickness 1.2 mm

Caution!

Male connector allows to connect two parts of pipe when there is a cut-to-size necessity.

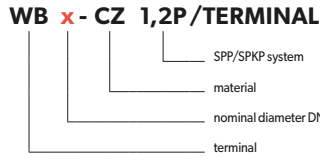
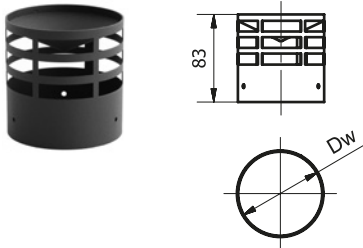
19. TERMINAL WITH COVER



Diameter DN	ø80	ø100
Dk	81	101
Weight [kg]	0.4	0.45

Destination	D	D - smoke ducts
Material	X	X - stainless steel 1.4301 powder coated black colour
Sheet thickness	0.5	0.5 - sheet thickness 0.5 mm

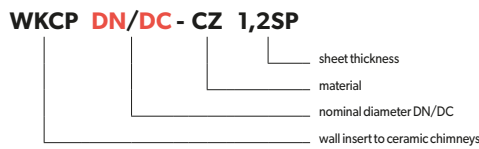
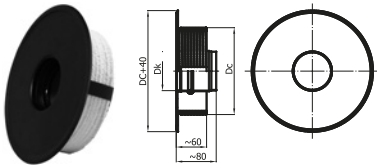
20. TERMINAL WB



Diameter DN	ø80	ø100
Dw	82	102
Weight [kg]	0.15	0.20

Destination	D	D - smoke ducts
Material	X	X - stainless steel 1.4301 powder coated black colour
Sheet thickness	0.5	0.5 - sheet thickness 0.5 mm

21. WALL INSERT TO CERAMIC CHIMNEYS WKCP

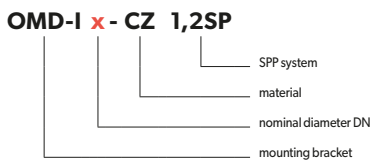
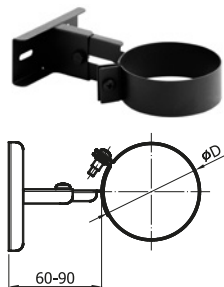


DC - chimney diameter
DN - chimney connection diameter

Diameter DN	ø80	ø100
Dk [mm]	81.1	101.2
Weight [kg]	0.71	0.77

Destination	D	D - smoke ducts
Material	CZ	CZ - mild steel DC01
Sheet thickness	1.2	1.2 - sheet thickness 1.2 mm

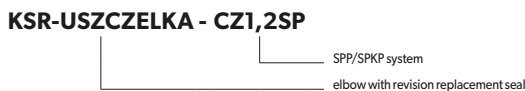
22. MOUNTING BRACKET OMD-I



Diameter DN	ø80	ø100
øD [mm]	80	100
Weight [kg]	0.16	0.17

Destination	D	D - smoke ducts
Material	CZ	CZ - mild steel DC01

23. REVISION REPLACEMENT SEAL



Caution! Sold in sets of 2 pcs.

24. TRZ TEE REVISION REPLACEMENT SEAL



Caution! Sold in sets of 2 pcs.
Material: ceramic paper

CHIMNEY COWLS

STEERING & POWER SUPPLY

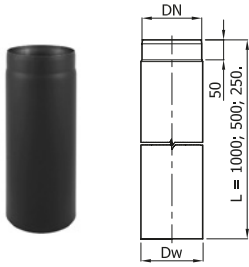
HOT AIR DISTRIBUTION SYSTEM

CHIMNEYS

VENTILATION

invent. build. enjoy.

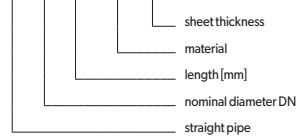
1. STRAIGHT PIPE 1000, 500, 250 [mm] RP



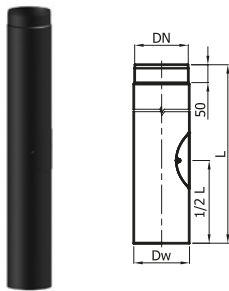
Diameter DN	ø120	ø130	ø150	ø160	ø180	ø200	ø220	ø250
Dw	121.0	131.0	151.0	161.0	181.0	201.0	221.0	251.0
Weight [kg]	L=1000	6.20	6.70	7.70	8.20	9.20	10.25	11.20
	L=500	3.10	3.35	3.85	4.20	4.60	5.10	5.60
	L=250	1.55	1.70	1.95	2.10	2.30	2.55	2.80

Destination	D	D - smoke ducts
Material	CZ	CZ - mild steel DC01
Sheet thickness s	2	2 - sheet thickness 2.0 mm

RP x/L - CZ 2



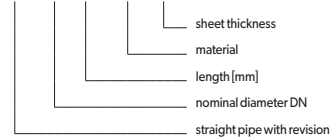
2. STRAIGHT PIPE WITH REVISION 1000, 500, 250 [mm] RPr



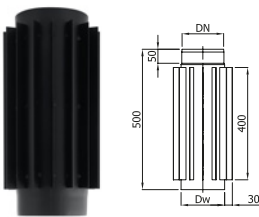
Diameter DN	ø120	ø130	ø150	ø160	ø180	ø200	ø220	ø250
Dw	121.0	131.0	151.0	161.0	181.0	201.0	221.0	251.0
Weight [kg] L = 1000 mm	1.55	1.70	1.95	2.10	2.30	2.55	2.80	3.18

Destination	D	D - smoke ducts
Material	CZ	CZ - mild steel DC01
Sheet thickness s	2	2 - sheet thickness 2.0 mm

RPr x/L - CZ 2



3. RADIATOR PIPE 500 [mm] RPZ



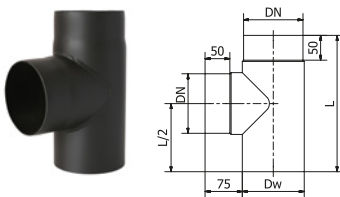
Diameter DN	ø120	ø130	ø150	ø160	ø180	ø200	ø220	ø250
Dw	121.0	131.0	151.0	161.0	181.0	201.0	221.0	251.0
Weight [kg]	6.00	6.30	6.55	6.80	7.70	8.60	9.25	10.00

Destination	D	D - smoke ducts
Material	CZ	CZ - mild steel DC01
Sheet thickness s	2	2 - sheet thickness 2.00 mm

RPZ x/ 500 - CZ 2



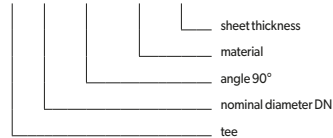
4. TEE 90° TR/90



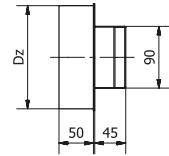
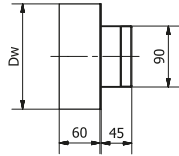
Diameter DN	ø120	ø130	ø150	ø160	ø180	ø200	ø220	ø250
Dw	121.0	131.0	151.0	161.0	181.0	201.0	221.0	251.0
L [mm]	275	285	305	315	335	355	375	405
Weight [kg]	2.00	2.20	2.70	3.00	3.50	4.00	4.60	5.60

Destination	D	D - smoke ducts
Material	CZ	CZ - mild steel DC01
Sheet thickness s	2	2 - sheet thickness 2.0 mm

TR x/ 90 - CZ 2



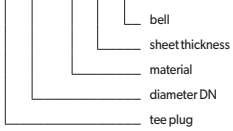
5. TEE PLUG ZT-K/N



Diameter DN	ø120	ø130	ø150	ø160	ø180	ø200	ø220	ø250
Dw	ø121	ø131	ø151	ø161	ø181	ø201	ø221	ø251
Weight [kg]	0.61	0.67	0.81	0.87	1.00	1.20	1.30	1.60

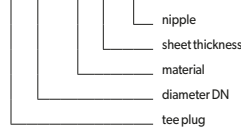
Diameter DN	ø120	ø130	ø150	ø160	ø180	ø200	ø220	ø250
Dz	ø120	ø130	ø150	ø160	ø180	ø200	ø220	ø250
Weight [kg]	0.54	0.60	0.72	0.78	0.92	1.10	1.22	1.47

ZT x - CZ2 - K



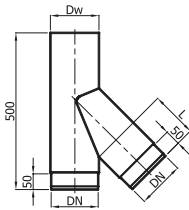
Destination	D	D - smoke ducts
Material	CZ	CZ - mild steel DC01
Sheet thickness s	2	2 - sheet thickness 2.0 mm

ZT x - CZ2 - N



Destination	D	D - smoke ducts
Material	CZ	CZ - mild steel DC01
Sheet thickness s	2	2 - sheet thickness 2.0 mm

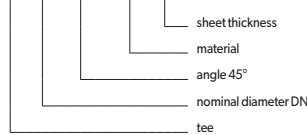
6. TEE 45° TR/45



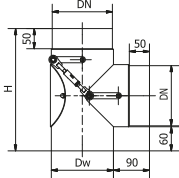
Diameter DN	ø120	ø130	ø150	ø160	ø180	ø200	ø220	ø250
Dw	121.0	131.0	151.0	161.0	181.0	201.0	221.0	251.0
L [mm]	150.0	150.0	150.0	150.0	150.0	150.0	180.0	120.0
Weight [kg]	3.10	3.40	3.90	4.20	4.60	5.10	7.55	8.70

Destination	D	D - smoke ducts
Material	CZ	CZ - mild steel DC01
Sheet thickness s	2	2 - sheet thickness 2.0 mm

TR x/45 - CZ 2



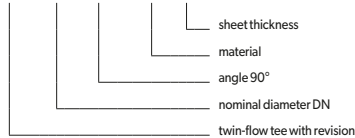
7. TWIN-FLOW TEE WITH REVISION TRMr



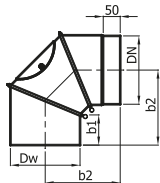
Diameter DN	ø120	ø130	ø150	ø160	ø180	ø200	ø220	ø250
Dw	121	131	151	161	181	201	221	251
H [mm]	275	285	305	315	335	355	375	405
Weight [kg]	3.10	3.40	4.00	4.40	5.10	6.00	6.80	8.10

Destination	D	D - smoke ducts
Material	CZ	CZ - mild steel DC01
Sheet thickness s	2	2 - sheet thickness 2.0 mm

TRMr x/ 90 - CZ 2



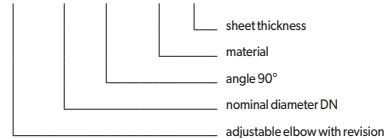
8. ADJUSTABLE ELBOW 90° WITH REVISION KNSR/90



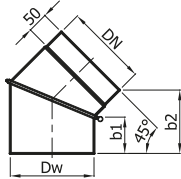
Diameter DN	ø120	ø130	ø150	ø160	ø180	ø200	ø220	ø250
Dw	121.0	131.0	151.0	161.0	181.0	201.0	221.0	251.0
b1 [mm]	84.0	86.0	85.0	85.0	82.0	73.0	83.0	83.0
b2 [mm]	220.0	220.0	224.5	220.0	219.0	221.0	273.0	270.0
Weight [kg]	2.80	3.00	3.40	3.80	4.10	4.50	6.0	6.80

Destination	D	D - smoke ducts
Material	CZ	CZ - mild steel DC01
Sheet thickness s	2	2 - sheet thickness 2.0 mm

KNSR x/ 90 - CZ 2



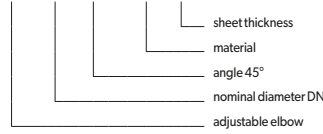
9. ADJUSTABLE ELBOW 45° KNS/45



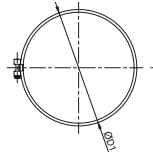
Diameter DN	ø120	ø130	ø150	ø160	ø180	ø200	ø220	ø250
Dw	121.0	131.0	151.0	161.0	181.0	201.0	221.0	251.0
b1 [mm]	84.0	86.0	85.0	85.0	82.0	73.0	83.0	83.0
b2 [mm]	172.0	170.0	162.0	158.0	151.0	144.0	165.0	165.0
Weight [kg]	1.80	1.90	2.10	2.20	2.35	2.50	3.30	3.30

Destination	D	D - smoke ducts
Material	CZ	CZ - mild steel DC01
Sheet thickness s	2	2 - sheet thickness 2.0 mm

KNS x/45 - CZ 2



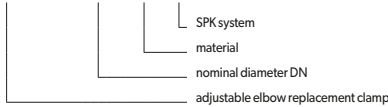
10. ADJUSTABLE ELBOW REPLACEMENT CLAMP; ADJUSTABLE ELBOW REPLACEMENT CERAMIC SEAL



Caution! Sold in sets of 2 pcs.

Diameter DN	ø120	ø130	ø150	ø160	ø180	ø200	ø220	ø250
D1	152	162	184	196	217	240	260	300
Weight [kg]	0.10	0.10	0.10	0.10	0.10	0.10	0.10	0.10

KNSR-OPASKA x - CZ 2



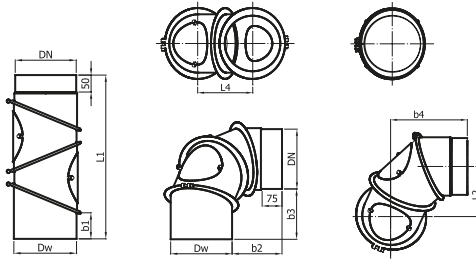
KNSR-USZCZELKA - CZ 2



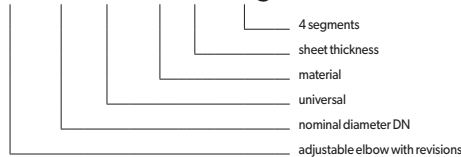
11. ADJUSTABLE ELBOW WITH REVISION - 4 SEGMENTS KNSR/UNI



Available configurations



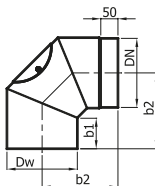
KNSR x/UNI - CZ 2-4seg



Diameter DN	ø120	ø130	ø150	ø160	ø180	ø200	ø220	ø250
Dw [mm]	121.0	131.0	151.0	161.0	181.0	201.0	221.0	251.0
b1 [mm]	84.0	86.0	85.0	85.0	82.0	73.0	83.0	83.0
b2 [mm]	205.0	190.0	180.0	160.0	160.0	145.0	220.0	200.0
b3 [mm]	205.0	190.0	180.0	160.0	160.0	145.0	220.0	200.0
b4 [mm]	265.0	285.0	275.0	280.0	290.0	300.0	335.0	330.0
b5 [mm]	225.0	220.0	200.0	200.0	200.0	200.0	280.0	260.0
L1 [mm]	535.0	535.0	525.0	500.0	515.0	505.0	650.0	640.0
L2 [mm]	200.0	200.0	190.0	160.0	180.0	200.0	240.0	230.0
L3 [mm]	440.0	440.0	440.0	415.0	430.0	420.0	540.0	535.0
L4 [mm]	225.0	220.0	200.0	200.0	200.0	200.0	280.0	260.0
Weight [kg]	3.90	4.30	4.80	5.20	5.70	6.30	8.80	9.60

Destination	D	D - smoke ducts
Material	CZ	CZ - mild steel DC01
Sheet thickness s	2	2 - sheet thickness 2.0 mm

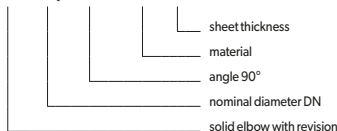
12. SOLID ELBOW 90° WITH REVISION KSR/90



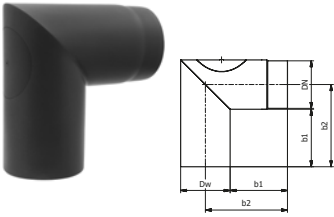
Diameter DN	ø120	ø130	ø150	ø160	ø180	ø200	ø220	ø250
Dw [mm]	121.0	131.0	151.0	161.0	181.0	201.0	221.0	251.0
b1 [mm]	96.0	94.0	95.0	95.0	87.0	84.0	95.0	95.0
b2 [mm]	243.0	243.0	241.0	240.0	242.0	241.0	271.0	292.0
Weight [kg]	2.80	3.00	3.40	3.60	4.10	4.50	6.0	6.80

Destination	D	D - smoke ducts
Material	CZ	CZ - mild steel DC01
Sheet thickness s	2	2 - sheet thickness 2.0 mm

KSR x/90 - CZ 2



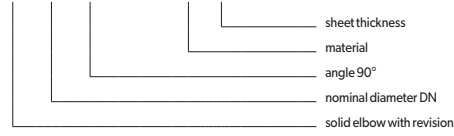
13. SOLID POLISHED ELBOW 90° WITH REVISION KSR/90



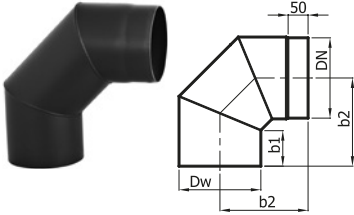
Diameter DN	ø120	ø130	ø150	ø160	ø180	ø200	ø220	ø250
Dw [mm]	121.0	131.0	151.0	161.0	181.0	201.0	221.0	251.0
b1 [mm]	145	145	145	145	145	145	145	145
b2 [mm]	207.5	212.5	222.5	227.5	237.5	247.5	257.5	272.5
Weight [kg]	2.60	2.90	3.50	3.80	4.40	5.10	5.80	6.90

Destination	D	D - smoke ducts
Material	CZ	CZ - mild steel DC01
Sheet thickness s	2	2 - sheet thickness 2.0 mm

KSR x/90 - SzL - CZ 2-2SEG



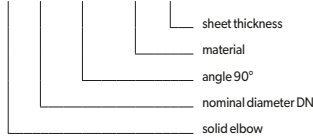
14. SOLID ELBOW 90° KS/90



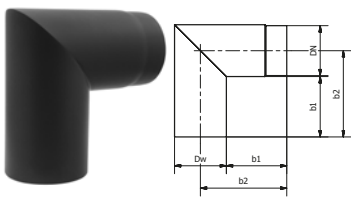
Diameter DN	ø120	ø130	ø150	ø160	ø180	ø200	ø220	ø250
Dw [mm]	121.0	131.0	151.0	161.0	181.0	201.0	221.0	251.0
b1 [mm]	96.0	94.0	95.0	95.0	87.0	84.0	95.0	95.0
b2 [mm]	243.0	243.0	241.0	240.0	242.0	241.0	271.0	292.0
Weight [kg]	2.80	3.00	3.40	3.60	4.10	4.50	6.00	6.80

Destination	D	D - smoke ducts
Material	CZ	CZ - mild steel DC01
Sheet thickness s	2	2 - sheet thickness 2.0 mm

KS x/90 - CZ 2



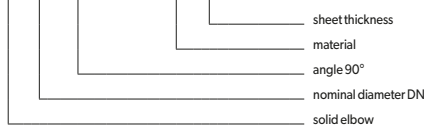
15. SOLID POLISHED ELBOW 90° KS/90



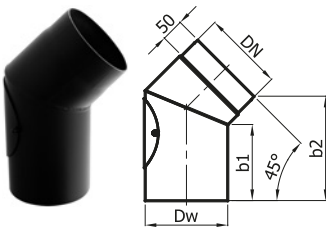
Diameter DN	ø120	ø130	ø150	ø160	ø180	ø200	ø220	ø250
Dw [mm]	121.0	131.0	151.0	161.0	181.0	201.0	221.0	251.0
b1 [mm]	145	145	145	145	145	145	145	145
b2 [mm]	207.5	212.5	222.5	227.5	237.5	247.5	257.5	272.5
Weight [kg]	2.60	2.90	3.50	3.80	4.40	5.10	5.80	6.90

Destination	D	D - smoke ducts
Material	CZ	CZ - mild steel DC01
Sheet thickness s	2	2 - sheet thickness 2.0 mm

KS x/90 - SzL - CZ 2-2SEG



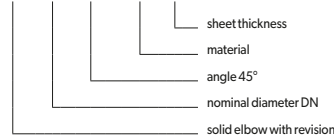
16. SOLID ELBOW 45° WITH REVISION KSR/45



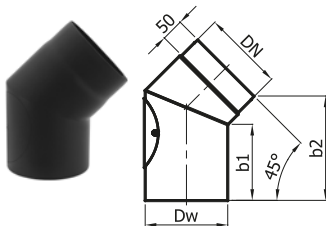
Diameter DN	ø120	ø130	ø150	ø160	ø180	ø200	ø220	ø250
Dw [mm]	121.0	131.0	151.0	161.0	181.0	201.0	221.0	251.0
b1 [mm]	187.0	184.0	174.0	170.0	170.0	165.0	145.0	132.0
b2 [mm]	258.0	254.0	245.0	241.0	235.0	228.0	216.0	204.0
Weight [kg]	2.10	2.30	2.60	2.80	3.10	3.50	3.80	4.30

Destination	D	D - smoke ducts
Material	CZ	CZ - mild steel DC01
Sheet thickness s	2	2 - sheet thickness 2.0 mm

KSR x/45 - CZ 2



17. SOLID POLISHED ELBOW 45° WITH REVISION KSR/45



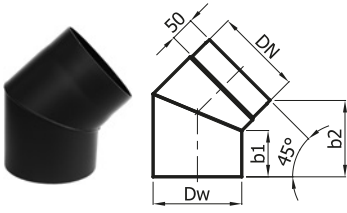
Diameter DN	ø120	ø130	ø150	ø160	ø180	ø200	ø220	ø250
Dw [mm]	121.0	131.0	151.0	161.0	181.0	201.0	221.0	251.0
b1 [mm]	187.0	184.0	174.0	170.0	170.0	165.0	145.0	132.0
b2 [mm]	258.0	254.0	245.0	241.0	235.0	228.0	216.0	204.0
Weight [kg]	2.10	2.30	2.60	2.80	3.10	3.50	3.80	4.30

Destination	D	D - smoke ducts
Material	CZ	CZ - mild steel DC01
Sheet thickness s	2	2 - sheet thickness 2.0 mm

KSR x/45 - SzL - CZ 2



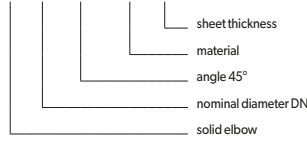
18. SOLID ELBOW 45° KS/45



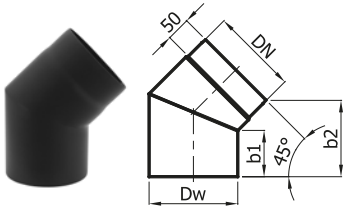
Diameter DN	ø120	ø130	ø150	ø160	ø180	ø200	ø220	ø250
Dw [mm]	121.0	131.0	151.0	161.0	181.0	201.0	221.0	251.0
b1 [mm]	96	94.0	95.0	95.0	87.0	84.0	95.0	95.0
b2 [mm]	172.0	170.0	162.0	158.0	151.0	144.0	165.0	165.0
Weight [kg]	1.80	1.90	2.10	2.20	2.35	2.50	3.33	3.90

Destination	D	D - smoke ducts
Material	CZ	CZ - mild steel DC01
Sheet thickness s	2	2 - sheet thickness 2.0 mm

KS x/45 - CZ 2



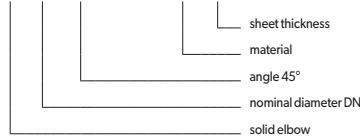
19. SOLID POLISHED ELBOW 45° KS/45



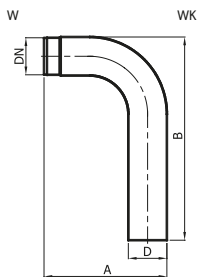
Diameter DN	ø120	ø130	ø150	ø160	ø180	ø200	ø220	ø250
Dw [mm]	121.0	131.0	151.0	161.0	181.0	201.0	221.0	251.0
b1 [mm]	96	94.0	95.0	95.0	87.0	84.0	95.0	95.0
b2 [mm]	172.0	170.0	162.0	158.0	151.0	144.0	165.0	165.0
Weight [kg]	1.80	1.90	2.10	2.20	2.35	2.50	3.33	3.90

Destination	D	D - smoke ducts
Material	CZ	CZ - mild steel DC01
Sheet thickness s	2	2 - sheet thickness 2.0 mm

KS x/45 - SzL - CZ 2



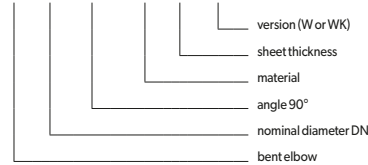
20. BENT ELBOW - HIGH, HIGH-SHORT KG



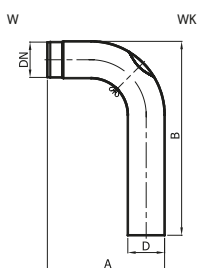
Version	W (high)			WK (high-short)		
Diameter DN	ø120	ø130	ø150	ø120	ø130	ø150
øD [mm]	125.0	135.0	155.0	125.0	135.0	155.0
øDk [mm]	120.0	130.0	150.0	120.0	130.0	150.0
A [mm]	398.0	420.0	460.0	318.0	340.0	380.0
B [mm]	645.0	640.0	645.0	645.0	640.0	645.0
Weight [kg]	5.10	5.50	6.60	4.70	5.00	6.00

Destination	D	D - smoke ducts
Material	CZ	CZ - mild steel DC01
Sheet thickness s	2	2 - sheet thickness 2.0 mm

KG x/90 - CZ 2/ ...



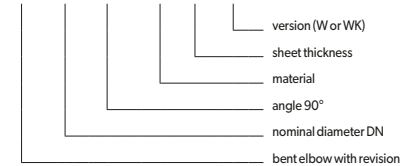
21. BENT ELBOW - HIGH, HIGH-SHORT WITH REVISION



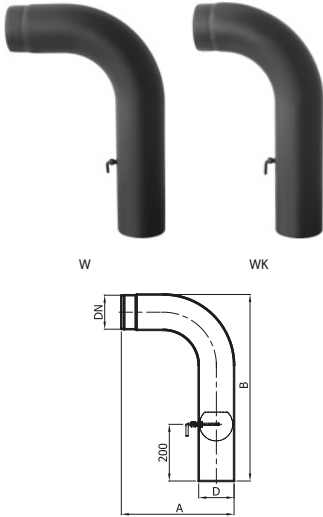
Version	W (high)			WK (high-short)		
Diameter DN	ø120	ø130	ø150	ø120	ø130	ø150
øD [mm]	125.0	135.0	155.0	125.0	135.0	155.0
øDk [mm]	120.0	130.0	150.0	120.0	130.0	150.0
A [mm]	398.0	420.0	460.0	318.0	340.0	380.0
B [mm]	645.0	640.0	645.0	645.0	640.0	645.0
Weight [kg]	5.20	5.60	6.70	4.70	5.00	6.10

Destination	D	D - smoke ducts
Material	CZ	CZ - mild steel DC01
Sheet thickness s	2	2 - sheet thickness 2.0 mm

KGR x/90 - CZ 2/ ...

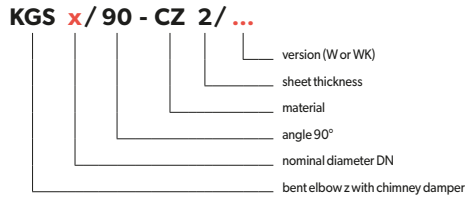


22. BENT ELBOW - HIGH, HIGH-SHORT WITH CHIMNEY DAMPER KGS

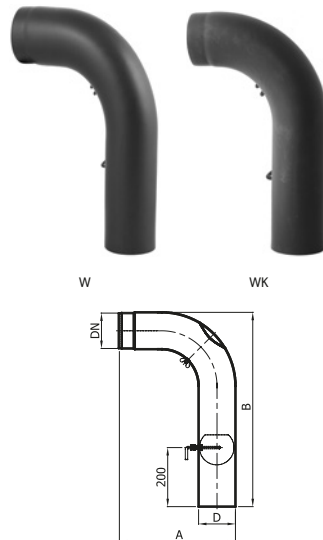


Version	W (high)			WK (high-short)		
Diameter DN	ø120	ø130	ø150	ø120	ø130	ø150
øD [mm]	125.0	135.0	155.0	125.0	135.0	155.0
øDk [mm]	120.0	130.0	150.0	120.0	130.0	150.0
A [mm]	398.0	420.0	460.0	318.0	340.0	380.0
B [mm]	645.0	640.0	645.0	645.0	640.0	645.0
Weight [kg]	5.40	5.80	6.90	4.90	5.20	6.30

Destination	D	D - smoke ducts
Material	CZ	CZ - mild steel DC01
Sheet thickness s	2	2 - sheet thickness 2.0 mm

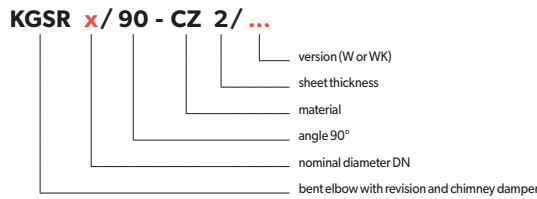


23. BENT ELBOW - HIGH, HIGH-SHORT WITH REVISION AND CHIMNEY DAMPER KGSR

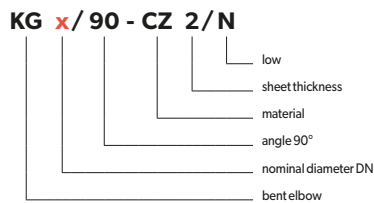
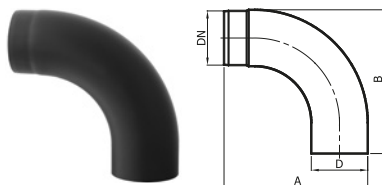


Version	W (high)			WK (high-short)		
Diameter DN	ø120	ø130	ø150	ø120	ø130	ø150
øD [mm]	125.0	135.0	155.0	125.0	135.0	155.0
øDk [mm]	120.0	130.0	150.0	120.0	130.0	150.0
A [mm]	398.0	420.0	460.0	318.0	340.0	380.0
B [mm]	645.0	640.0	645.0	645.0	640.0	645.0
Weight [kg]	5.50	5.80	7.00	5.00	5.30	6.40

Destination	D	D - smoke ducts
Material	CZ	CZ - mild steel DC01
Sheet thickness s	2	2 - sheet thickness 2.0 mm



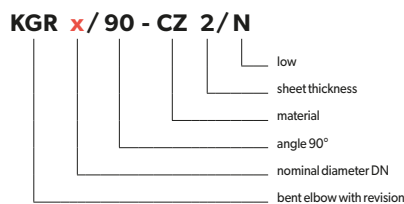
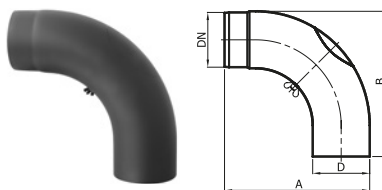
24. BENT ELBOW LOW KG



Diameter DN	ø120	ø130	ø150
øD [mm]	125.0	135.0	155.0
øDk [mm]	120.0	130.0	150.0
A [mm]	318.0	340.0	380.0
B [mm]	318.0	340.0	380.0
Weight [kg]	2.60	3.00	3.80

Destination	D	D - smoke ducts
Material	CZ	CZ - mild steel DC01
Sheet thickness s	2	2 - sheet thickness 2.0 mm

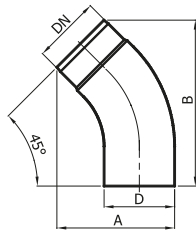
25. BENT ELBOW LOW WITH REVISION KGR



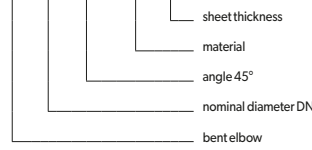
Diameter DN	ø120	ø130	ø150
øD [mm]	125.0	135.0	155.0
øDk [mm]	120.0	130.0	150.0
A [mm]	318.0	340.0	380.0
B [mm]	318.0	340.0	380.0
Weight [kg]	2.70	3.10	3.90

Destination	D	D - smoke ducts
Material	CZ	CZ - mild steel DC01
Sheet thickness s	2	2 - sheet thickness 2.0 mm

26. BENT ELBOW 45° KG



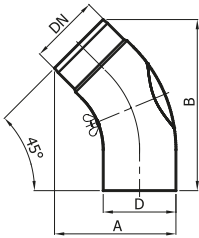
KG x/45 - CZ 2



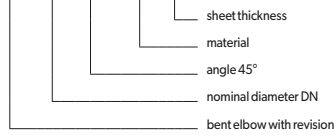
Diameter DN	ø120	ø130	ø150
øD [mm]	125.0	135.0	155.0
øDk [mm]	120.0	130.0	150.0
A [mm]	208.0	222.0	248.0
B [mm]	294.0	308.0	336.0
Weight [kg]	1.70	1.90	2.40

Destination	D	D - smoke ducts
Material	CZ	CZ - mild steel DC01
Sheet thickness s	2	2 - sheet thickness 2.0 mm

27. BENT ELBOW 45° WITH REVISION KGR



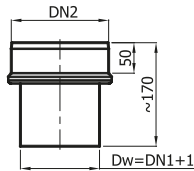
KGR x/45 - CZ 2



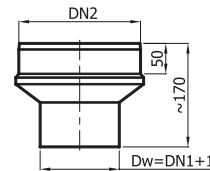
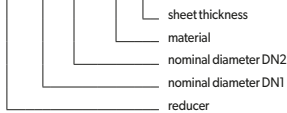
Diameter DN	ø120	ø130	ø150
øD [mm]	125.0	135.0	155.0
øDk [mm]	120.0	130.0	150.0
A [mm]	208.0	222.0	248.0
B [mm]	294.0	308.0	336.0
Weight [kg]	1.80	2.00	2.50

Destination	D	D - smoke ducts
Material	CZ	CZ - mild steel DC01
Sheet thickness s	2	2 - sheet thickness 2.0 mm

28. REDUCERS RD



RD x/y - CZ 2



RD x/y - CZ 2 - S

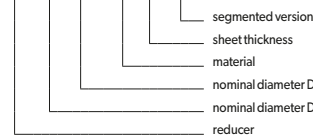
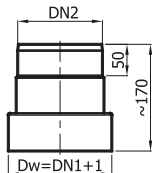


Table of versions and available diameters

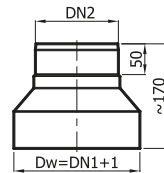
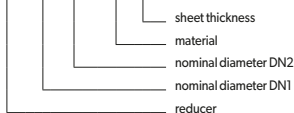
Diameter DN 2		ø120	ø130	ø150	ø160	ø180	ø200	ø220	ø250
Diameter DN 1	ø120	-	RD	RD	RD	RD-S	RD-S	RD-S	RD-S
	ø130	RD	-	RD	RD	RD	RD-S	RD-S	RD-S
	ø150	RD	RD	-	RD	RD	RD	RD-S	RD-S
	ø160	RD	RD	RD	-	RD	RD	RD-S	RD-S
	ø180	RD-S	RD	RD	RD	-	RD	RD	RD-S
	ø200	RD-S	RD-S	RD	RD	RD	-	RD	RD
	ø220	RD-S	RD-S	RD-S	RD-S	RD	RD	-	RD
	ø250	RD-S	RD-S	RD-S	RD-S	RD-S	RD	RD	-

Destination	D	D - smoke ducts
Material	CZ	CZ - mild steel DC01
Sheet thickness s	2	2 - sheet thickness 2.0 mm

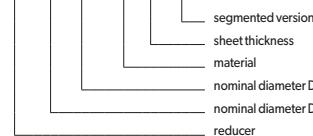
29. REDUCERS RD



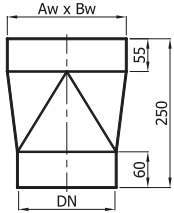
RD x/y - CZ 2



RD x/y - CZ 2 - S



30. REDUCER RDKW



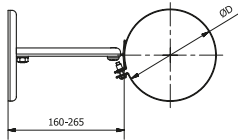
Measurements Aw x Bw [mm]	122 x 122	135 x 189	142 x 142	142 x 162	152 x 152	162 x 162	171 x 171	180 x 180	192 x 192	200 x 200	
Diameter DN	ø120	1.80 kg	-	-	-	-	-	-	-	-	
	ø130	1.85 kg	-	2.00 kg	-	2.05 kg	-	-	-	-	
	ø150	1.95 kg	-	2.10 kg	-	2.10 kg	2.30 kg	2.35 kg	2.40 kg	-	
	ø160	-	-	2.15 kg	-	2.15 kg	2.40 kg	2.45 kg	2.50 kg	2.60 kg	2.70 kg
	ø180	-	2.70 kg	2.25 kg	2.40 kg	2.30 kg	2.50 kg	2.55 kg	2.60 kg	2.70 kg	2.80 kg
	ø200	-	2.90 kg	2.35 kg	-	2.45 kg	2.60 kg	2.65 kg	2.70 kg	2.80 kg	2.90 kg

RD kw AxB / x - CZ 2



Destination	D	D - smoke ducts
Material	CZ	CZ - mild steel DC01
Sheet thickness s	2	2 - sheet thickness 2.0 mm

31. MOUNTING BRACKET



Diameter DN	ø120	ø130	ø150	ø160	ø180	ø200	ø220	ø250
D [mm]	125	135	155	165	185	205	225	255
Weight [kg]	0.44	0.45	0.47	0.48	0.50	0.52	0.54	0.57

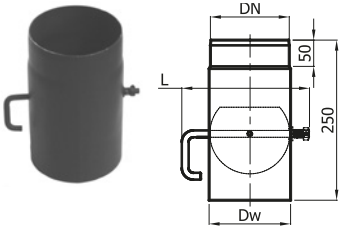
OMD-I ... / 15-25 - CZ 2



Destination	D	D - smoke ducts
Material	CZ	CZ - mild steel DC01
Sheet thickness s	2	2 - sheet thickness 2.0 mm

Not to use with flammable materials.

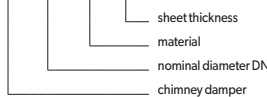
32. CHIMNEY DAMPER WITH SHORT HANDLE SZK



Chimney dampers are produced in versions:

- with long handle for diameters 180, 200, 220 and 250
- with short handle 120, 130, 150 and 160

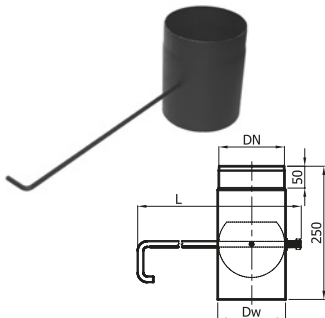
SZK x - CZ 2



Diameter DN	ø120	ø130	ø150	ø160
Dw [mm]	121.0	131.0	151.0	161.0
L [mm]	193.0	203.0	223.0	223.0
Weight [kg]	3.20	3.50	4.00	4.50

Destination	D	D - smoke ducts
Material	CZ	CZ - mild steel DC01
Sheet thickness s	2	2 - sheet thickness 2.0 mm

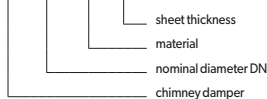
33. CHIMNEY DAMPER WITH LONG HANDLE SZK



Chimney dampers are produced in versions:

- with long handle for diameters 180, 200, 220 and 250
- with short handle 120, 130, 150 and 160

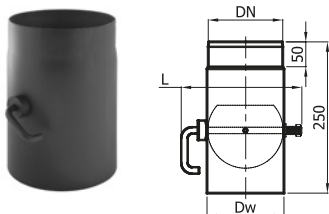
SZK x - CZ 2



Diameter DN	ø180	ø200	ø220	ø250
Dw [mm]	181.0	201.0	221.0	251.0
L [mm]	690.0	710.0	730.0	760.0
Weight [kg]	3.40	3.60	3.90	4.30

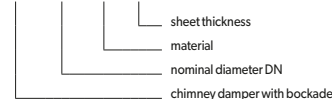
Destination	D	D - smoke ducts
Material	CZ	CZ - mild steel DC01
Sheet thickness s	2	2 - sheet thickness 2.0 mm

34. CHIMNEY DAMPER WITH BLOCKADE SZKB



In standard version damper is produced with short handle.

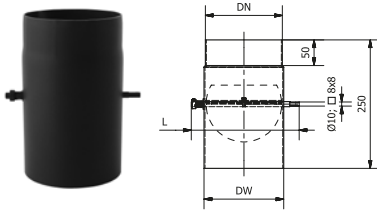
SZKB x - CZ 2



Diameter DN	ø120	ø130	ø150	ø160
Dw [mm]	121.0	131.0	151.0	161.0
L [mm]	193.0	203.0	223.0	223.0
Weight [kg]	3.20	3.50	4.00	4.50

Destination	D	D - smoke ducts
Material	CZ	CZ - mild steel DC01
Sheet thickness s	2	2 - sheet thickness 2.0 mm

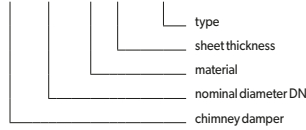
35. CHIMNEY DAMPER SZK 8x8



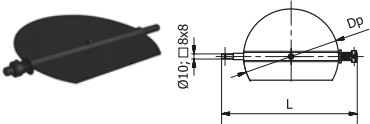
Diameter DN	ø120	ø130	ø150	ø160	ø180	ø200	ø220	ø250
Dw [mm]	121.0	131.0	151.0	161.0	181.0	201.0	221.0	251.0
L [mm]	180	190	210	220	240	260	280	310
Weight [kg]	1.65	1.95	2.25	2.41	2.76	3.10	3.47	4.00

Destination	D	D - smoke ducts
Material	CZ	CZ - mild steel DC01
Sheet thickness s	2	2 - sheet thickness 2.0 mm

SZK x - CZ 2 - 8x8



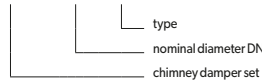
36. CHIMNEY DAMPER SET SZK-SET 8x8



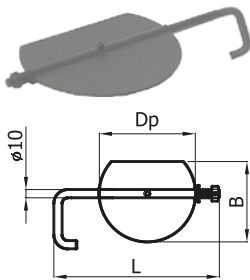
Diameter DN	ø120	ø130	ø150	ø160	ø180	ø200	ø220	ø250
Dp [mm]	117	127	147	157	177	197	217	247
L [mm]	180	190	210	220	240	260	280	310
Weight [kg]	0.28	0.32	0.37	0.41	0.51	0.59	0.73	0.91

Destination	D	D - smoke ducts
Material	CZ	CZ - mild steel DC01
Sheet thickness s	2	2 - sheet thickness 2.0 mm

SZK-SET x - 8x8



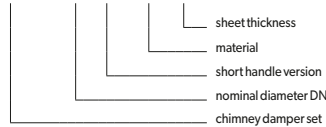
37. CHIMNEY DAMPER „DO IT YOURSELF” SET WITH SHORT HANDLE SZK-SET



Chimney dampers are produced in versions:

- with long handle for diameters 180, 200, 220 and 250
- with short handle 120, 130, 150 and 160

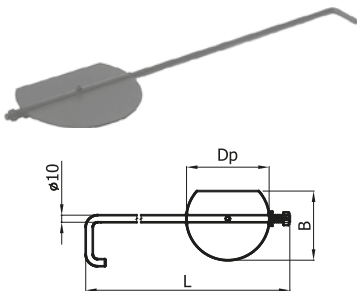
SZK-SET x - K - CZ 2



Diameter DN	ø120	ø130	ø150	ø160
B [mm]	97.5	105.0	110.0	118.0
Dp [mm]	117.0	127.0	147.0	157.0
L [mm]	193.0	203.0	223.0	223.0
Weight [kg]	1.65	1.80	2.00	2.20

Destination	D	D - smoke ducts
Material	CZ	CZ - mild steel DC01
Sheet thickness s	2	2 - sheet thickness 2.0 mm

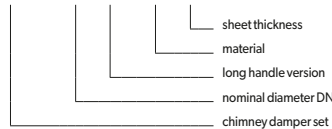
38. CHIMNEY DAMPER „DO IT YOURSELF” SET WITH LONG HANDLE SZK-SET



Chimney dampers are produced in versions:

- with long handle for diameters 180, 200, 220 and 250
- with short handle 120, 130, 150 and 160

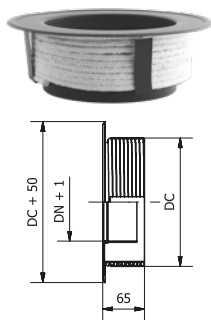
SZK-SET x - D - CZ 2



Diameter DN	ø180	ø200
B [mm]	142.5	154.5
Dp [mm]	177.0	197.0
L [mm]	690.0	710.0
Weight [kg]	2.70	3.00

Destination	D	D - smoke ducts
Material	CZ	CZ - mild steel DC01
Sheet thickness s	2	2 - sheet thickness 2.0 mm

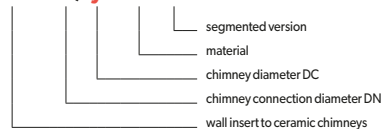
39. WALL INSERT TO CERAMIC CHIMNEYS WKCP



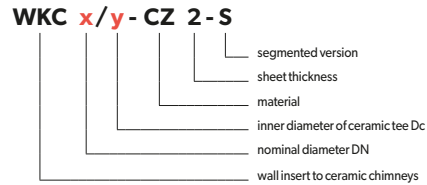
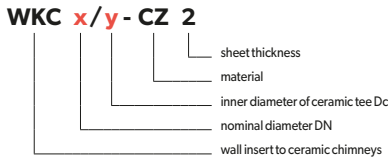
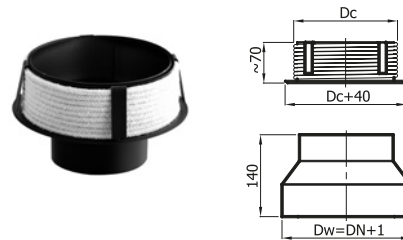
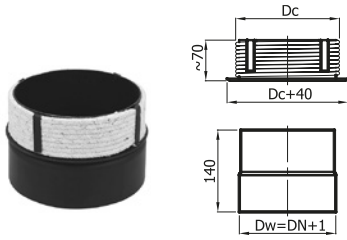
Diameter DC	ø150	ø160	ø180	ø200	ø220	ø250
Diameter DN	ø120	WKCP	WKCP	WKCP	WKCP	WKCP
	ø130	-	WKCP	WKCP	WKCP	WKCP
	ø150	-	-	WKCP	WKCP	WKCP
	ø160	-	-	-	WKCP	WKCP
	ø180	-	-	-	-	WKCP
	ø200	-	-	-	-	WKCP
	ø220	-	-	-	-	WKCP

Destination	D	D - smoke ducts
Material	CZ	CZ - mild steel DC01
Sheet thickness s	2	2 - sheet thickness 2.0 mm

WKCP x/y - CZ 2



40. WALL INSERTS TO CERAMIC CHIMNEYS WKC; WKC-S



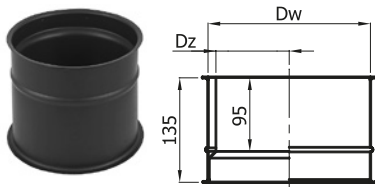
This wall insert protects tees of ceramic chimneys from damages caused by thermal expansion of metal elements of the chimney connection.

Destination	D	D - smoke ducts
Material	CZ	CZ - mild steel DC01
Sheet thickness s	2	2 - sheet thickness 2.0 mm

Table of versions and available sets

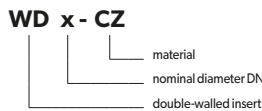
Diameter DN	Diameter DC																	
	ø120		ø130		ø140		ø150		ø160		ø180		ø200		ø220		ø250	
	Version	Weight [kg]	Version	Weight [kg]	Version	Weight [kg]	Version	Weight [kg]	Version	Weight [kg]	Version	Weight [kg]	Version	Weight [kg]	Version	Weight [kg]	Version	Weight [kg]
ø120	WKC	1.10	WKC	1.15	WKC	1.30	WKC	1.30	WKC	1.40	WKC	1.60	WKC-S	1.85	WKC-S	-	WKC-S	-
ø130	WKC	1.15	WKC	1.20	WKC	1.35	WKC	1.35	WKC	1.50	WKC	1.60	WKC	1.65	WKC-S	-	WKC-S	-
ø150	WKC	1.25	WKC	1.30	WKC	1.40	WKC	1.50	WKC	1.60	WKC	1.65	WKC	1.70	WKC	1.90	WKC-S	-
ø160	WKC-S	1.70	WKC-S	1.75	WKC	1.50	WKC	1.60	WKC	1.65	WKC	1.70	WKC	1.75	WKC	1.90	WKC	1.95
ø180	WKC-S	1.85	WKC-S	1.90	WKC-S	1.95	WKC-S	2.00	WKC	1.75	WKC	1.80	WKC	1.85	WKC	2.00	WKC	2.00
ø200	WKC-S	1.95	WKC-S	2.00	WKC-S	2.05	WKC-S	2.10	WKC-S	2.15	WKC	1.90	WKC	1.95	WKC	2.05	WKC	2.05
ø220	WKC-S	-	WKC-S	-	WKC-S	-	WKC-S	-	WKC-S	-	WKC	2.00	WKC	2.05	WKC	2.10	WKC	2.20
ø250	WKC-S	-	WKC-S	-	WKC-S	-	WKC-S	-	WKC-S	-	WKC-S	-	WKC-S	2.35	WKC	2.20	WKC	2.30

41. DOUBLE - WALLED WALL INSERT WD



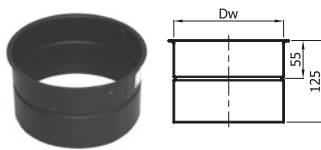
Diameter DN	ø120	ø130	ø150	ø160	ø180	ø200	ø220	ø250
Dz [mm]	110.0	120.0	140.0	150.0	170.0	190.0	210.0	240.0
Dw [mm]	128.0	138.0	158.0	168.0	188.0	208.0	228.0	258.0
Weight [kg]	0.65	0.70	0.85	0.90	1.00	1.10	1.20	1.25

Destination	D	D - smoke ducts
Material	CZ	CZ - mild steel DC01
Sheet thickness s	8	8 - sheet thickness 0.8 mm



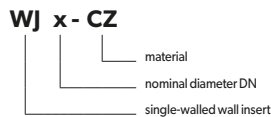
Caution!
Double-walled insert is used to secure connection of the SPK element to chimney duct with metal insert.

42. SINGLE-WALLED WALL INSERT WJ

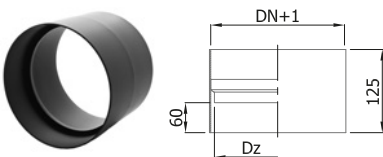


Diameter DN	ø120	ø130	ø150	ø160	ø180	ø200	ø220	ø250
Dw [mm]	128.0	138.0	158.0	168.0	188.0	208.0	228.0	258.0
Weight [kg]	0.30	0.35	0.40	0.42	0.45	0.50	0.55	0.60

Destination	D	D - smoke ducts
Material	CZ	CZ - mild steel DC01
Sheet thickness s	8	8 - sheet thickness 0.8 mm

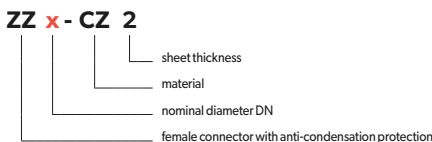


43. FEMALE CONNECTOR WITH ANTI-CONDENSATION PROTECTION ZZ



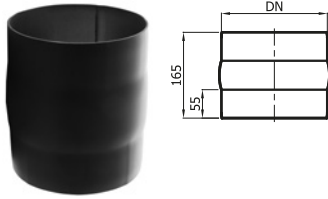
Diameter DN	ø120	ø130	ø150	ø160	ø180	ø200	ø220	ø250
Dz [mm]	110.0	120.0	140.0	150.0	170.0	190.0	210.0	240.0
Weight [kg]	0.95	1.10	1.20	1.30	1.45	1.60	1.75	1.90

Destination	D	D - smoke ducts
Material	CZ	CZ - mild steel DC01
Sheet thickness s	2	2 - sheet thickness 2.0 mm

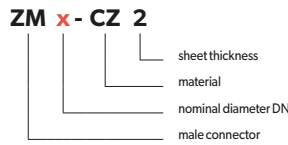


Caution!
Female connector allows to connect two press-formed elements to each other and divert the connection schema.

44. MALE CONNECTOR ZM



Diameter DN	ø120	ø130	ø150	ø160	ø180	ø200	ø220	ø250
Weight [kg]	0.40	0.45	0.50	0.55	0.60	0.70	0.80	0.90

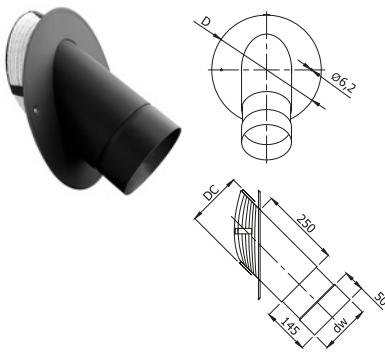


Destination	D	D - smoke ducts
Material	CZ	CZ - mild steel DC01
Sheet thickness s	2	2 - sheet thickness 2.0 mm

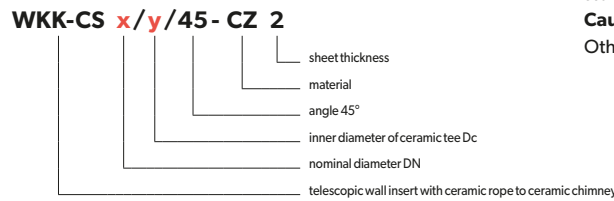
Caution!

Male connector allows to connect the on site cut pipe elements to other elements of the SPK system.

45. TELESCOPIC WALL INSERT WITH CERAMIC ROPE TO CERAMIC CHIMNEY WKK-CS



Diameter DN	ø150	ø150	ø180
DC	180.0	200.0	200.0
D	340.0	360.0	360.0
dw	151	151	181
Weight [kg]	2.95	3.20	3.20



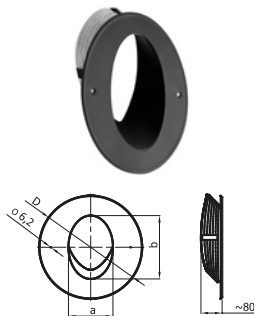
Destination	D	D - smoke ducts
Material	CZ	CZ - mild steel DC01
Sheet thickness s	2	2 - sheet thickness 2.0 mm

Telescopic wall insert allows to connect the stove/fireplace to the chimney at 45° angle

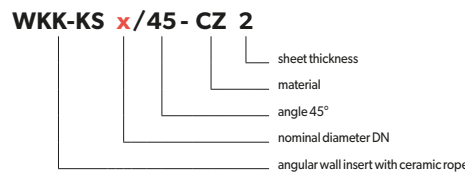
Caution!

Other inserts upon individual order

46. ANGULAR WALL INSERT WITH CERAMIC ROPE WKK-KS (TO BE BUILT IN)



Diameter DN	ø120	ø130	ø150	ø160	ø180	ø200	ø220	ø250
a [mm]	130.0	140.0	160.0	170.0	190.0	210.0	230.0	260.0
b [mm]	184.0	198.0	226.0	240.0	269.0	297.0	325.0	368.0
Diameter D	280	290	310	320	340	360	380	410
Weight [kg]	0.95	1.10	1.20	1.35	1.45	1.60	1.75	2.00



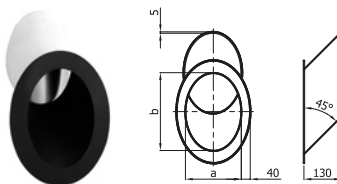
Destination	D	D - smoke ducts
Material	CZ	CZ - mild steel DC01
Sheet thickness s	2	2 - sheet thickness 2.0 mm

Angular insert allows to connect the stove/fireplace to the chimney at 45° angle.

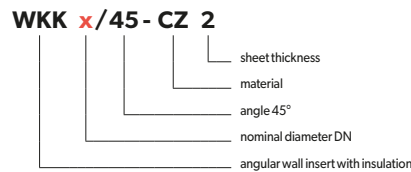
Caution!

Pipe element ending that is put into the WKK-KS wall insert should be cut at the proper angle, so the pipe does not go into chimney duct causing an obstruction.

47. ANGULAR WALL INSERT WITH INSULATION WKK (TO BE BUILT IN)



Diameter DN	ø120	ø130	ø150	ø160	ø180	ø200	ø220	ø250
a [mm]	130.0	140.0	160.0	170.0	190.0	210.0	230.0	260.0
b [mm]	184.0	198.0	226.0	240.0	269.0	297.0	325.0	368.0
Weight [kg]	0.95	1.10	1.20	1.35	1.45	1.60	1.75	1.90



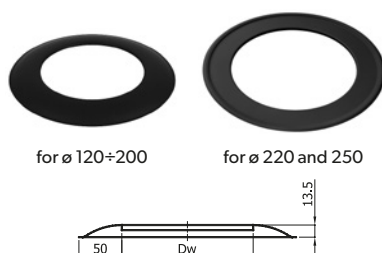
Destination	D	D - smoke ducts
Material	CZ	CZ - mild steel DC01
Sheet thickness s	2	2 - sheet thickness 2.0 mm

Angular wall insert allows to connect the stove to a chimney at 45° angle. Thermal insulation protects ceramic chimneys from damages caused by thermal expansion of metal elements.

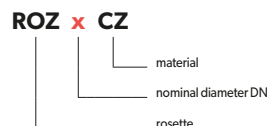
Caution!

Pipe element ending that is put into the WKK wall insert should be cut at the proper angle, so the pipe does not go into chimney duct causing an obstruction.

48. ROSETTE ROZ



Diameter DN	ø120	ø130	ø150	ø160	ø180	ø200	ø220	ø250
Dw [mm]	126.5	136.5	156.5	166.5	186.5	206.5	226.5	256.5
Weight [kg]	0.12	0.13	0.14	0.15	0.16	0.17	0.18	0.19



Destination	D	D - smoke ducts
Material	CZ	CZ - mild steel DC01
Sheet thickness s	6	6 - sheet thickness 0.6 mm

for ø 120÷200

for ø 220 and 250